



Godwin Newsletter - 19th December 2025

preparing pupils for lifelong success



Head Teacher's Message

Thank you for all of your support this term; whether that is watching your children's performances, attending Parent/Carer Conferences, making sure your children arrive on time and ready for their day at school, ensuring homework is completed or working with The Friends of Godwin to fundraise, all of this is greatly appreciated. We know that when we work in partnership together, our children benefit hugely from this.

We wish all of our families a relaxing and happy break over the festive season.

We are pleased to share that this term 248 of our pupils achieved our school attendance target of 96% and above. Regular attendance plays a vital role in children's learning, wellbeing and overall success, and we are very proud of the commitment shown by so many of our pupils and families. Thank you for your continued support in ensuring your child attends school everyday and arrives on time.



Thanks from our Pupil Parliament



This Christmas, we encourage our school community to choose Fairtrade gifts and treats where possible. Buying Fairtrade helps ensure farmers and workers receive fair pay, safe working conditions and respect for their rights.

This supports the UNCRC, particularly Articles 32 (protection from exploitation) and 29 (learning to respect others), as well as the UN Sustainable Development Goals: SDG 1 (No Poverty), SDG 8 (Decent Work), and SDG 12 (Responsible Consumption).

We are proud of our Fairtrade Achiever Award and thank you for helping us make ethical choices this Christmas. ❤️



We would like to thank all the staff who donated to our grand raffle and also all the parents, carers and children who purchased tickets.

We have raised an amazing total of £423 towards our performing arts studio project.



IMPORTANT DATE

First day back to school for all children -
Tuesday 6th January 2026

Winter Story Sprouts

Winter Mini Challenge

1 December 2025 - 28 February 2026

The Winter Mini Challenge is here again in your local library, for children of all ages. Become a champion and collect rewards for your reading.



Story Garden illustrations by Dapo Adeola, illustrations and logo © The ReadingAgency2025



DESIGN THE FRONT COVER OF THE LONDON CHILDREN'S FLOWER SOCIETY'S ANNUAL REPORT 2025!

London school children are invited to design the front cover of the Annual Report 2025. This year is a particularly special year as they will be celebrating their 80th anniversary!

- The competition is open to all London School children.
- A4 sized and any medium (paint, pencils & crayons etc).
- Theme: The joy of gardening and celebrating 80 years.
- We encourage bright, bold and colourful designs.
- Include child's name, age, and school with each entry

Closing date: 9th January 2026.

Prize for the winner & design published on our website.

All entries should be posted to:

The London Children's Flower Society

61a High Street

Orpington

Kent BR6 0JF

Or scanned and emailed to:

londonchildrensflowersociety@outlook.com

Get creative and help us celebrate 80 years of gardening joy!

Send a message to

07507 326 645

and chat with a
school nurse

Find @NwhmSchHealth at chathealth.nhs.uk

The guitars at Godwin Junior School urgently need replacing. To give the pupils at Godwin the chance to enjoy playing music, this project aims to raise £5000 to replace all 30 guitars with better instruments that will last years and encourage the children to have an interest in playing the guitar. If you can spare a donation, please scan the QR code. It will all help and go to a very good, local cause.



<https://gofund.me/f3ee5717f>



We are delighted to share with you a new NHS funded service designed to support young people aged 7-12 who are experiencing worries or anxieties; **Lumi Nova**.

What is Lumi Nova?

Lumi Nova is an intergalactic adventure game to support young people to fight fears and manage worries. Whilst exploring planets, customising characters and earning treasure your child breaks their fears and worries down into manageable steps, learning life-long skills and building resilience.

Watch this short animated video to learn more: [Lumi Nova Introduction Video](#)

Who can use Lumi Nova?

Lumi Nova was created for 7 - 12 year olds who are having difficulties with fears, worries or anxiety related to social situations, separation or phobias.

Lumi Nova is ideal for children who may:

- lack confidence to try new things
- seem unable to face simple everyday challenges
- find it hard to concentrate
- have problems with sleeping or eating
- have angry outbursts
- have negative thoughts about what's going to happen
- be avoiding everyday activities, eg. going to school, seeing friends
- become irritable, tearful or clingy



How do you access Lumi Nova?

Accessing Lumi Nova is quick and easy. Use the link below to register and you will receive a text message to guide you through getting started.

[Luminova.app/newham](https://luminova.app/newham)

To find out more visit luminova.app or join a [Parent Information Webinar](#).



HOLIDAY HAMMERS

Ages 5 - 14 years old

Chance to win a
pair of signed
Souček boots!



9am - 3pm
29th - 30th December
The Foundry

To book, please scan the QR code
or visit: foundation.whufc.com



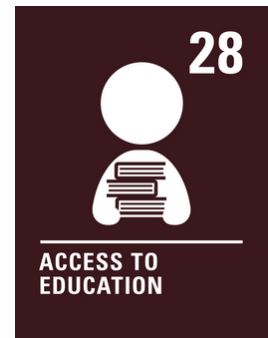
FOUNDATION

Whole-Class Attendance

CLASS	ATTENDANCE
3K	93.0%
3L	95.6%
3M	86.4%
3V	95.0%
4K	95.0%
4T	97.0%
4Y	96.5%
4I	95.8%

CLASS	ATTENDANCE
5W	92.2%
5O	97.7%
5B	96.3%
6Z	98.8%
6M	94.6%
6J	98.8%
average	95.1%

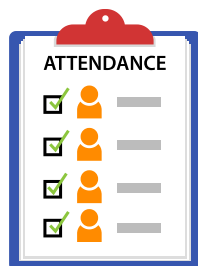
This attendance data is for the week beginning 8th December



Thank you for supporting our pupils to be at school as much as possible.
At the moment, our whole-school attendance for the academic year is 96.2%.
Thank you for this!

Attendance Cup

Congratulations to 4T and 6Z and 6J who won the attendance cups this week.



Punctuality Cup

Congratulations to 3M, 4K, 4Y and 5O who had no late marks at all. Well done!



Times Table

Rock Stars

4Y and 5B take the trophies this week. Keep it up!



Lining Up Cup

This week's winners are 3L and 6M.





Article of the week

In December, people across the globe celebrate in many ways, all special and unique! This is a perfect time to talk about **Articles 14** and **30** of the UNCRC, which tell us that children have the right to follow their own beliefs and to enjoy their culture, language and traditions.

Around the world, Christians celebrate Christmas, and Jewish people observe Hanukkah. In Africa, there's Kwanzaa, celebrating African heritage and community.

In Asia, some celebrate Bodhi Day, marking the day Buddha achieved enlightenment. Others may observe Pancha Ganapati, a five-day Hindu festival celebrating joy, family and kindness.

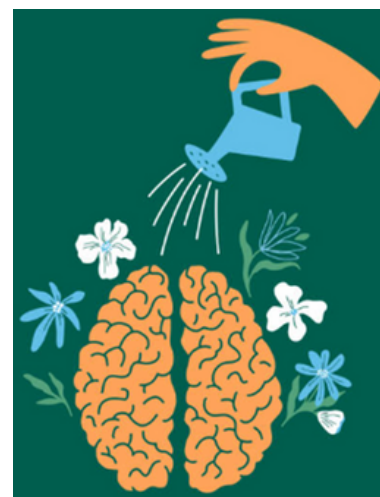
Learning about different beliefs and cultures helps us understand each other better and links to **SDG 4**: Quality Education, which supports learning that builds respect and understanding. British values such as mutual respect and tolerance help us appreciate different traditions, whether it's lighting candles, sharing stories or enjoying festive foods. So, let's celebrate our diverse December with curiosity and kindness! Happy celebrations!

Mindfulness Corner



Every Friday we will highlight a different group or organisation with resources for mental health and wellbeing. (We are not endorsing any particular site nor are we ambassadors for it - we are simply providing pointers towards sites that might be interesting/helpful).

THE SAMARITANS
<https://www.samaritans.org/>



"Not all storms come to disrupt your life. Some come to clear your path."
Paulo Coelho



Achievement Awards

3K - Aaliyah: for persevering and taking directions well during the class performance

3L - Mahera: for brilliant perseverance across all subjects and high achievement in reading

3M - Atanas: for persevering in all lessons and for always trying his best

3V - Isla: her perseverance in learning her lines for our Christmas performance

4K - Ayaan: for persevering with his learning across all subjects and being an excellent Learning Partner

4T - Ivan: for persevering with his learning and always pushing himself to excel further

4Y - Joshua: for persevering in all aspects of his learning especially writing

4I - Muhid: for persevering with his learning and working extremely hard all week

5W - Muif: for excellent perseverance in Maths

5O - Chelsea: for increasing perseverance and independence in Maths

5B - Emily: for considering her choices this week and working well collaboratively

6Z - Matei: for persevering to edit his writing

6M - Billy: for working extremely hard to consider his choices both inside and outside of the classroom

6J - Faryaal: for choosing to try hard in all that she does



Godwin Junior School 2025-26



School Holiday

Bank Holiday

Pupil Day

INSET Day

SEPTEMBER 2025							OCTOBER 2025							NOVEMBER 2025							DECEMBER 2025						
M	T	W	T	F	S	S	M	T	W	T	F	S	S	M	T	W	T	F	S	S	M	T	W	T	F	S	S
1	2	3	4	5	6	7			1	2	3	4	5								1	2	3	4	5	6	7
8	9	10	11	12	13	14	6	7	8	9	10	11	12	3	4	5	6	7	8	9	8	9	10	11	12	13	14
15	16	17	18	19	20	21	13	14	15	16	17	18	19	10	11	12	13	14	15	16	15	16	17	18	19	20	21
22	23	24	25	26	27	28	20	21	22	23	24	25	26	17	18	19	20	21	22	23	22	23	24	25	26	27	28
29	30						27	28	29	30	31			24	25	26	27	28	29	30	29	30	31				

JANUARY 2026							FEBRUARY 2026							MARCH 2026							APRIL 2026						
M	T	W	T	F	S	S	M	T	W	T	F	S	S	M	T	W	T	F	S	S	M	T	W	T	F	S	S
			1	2	3	4						1											1	2	3	4	5
5	6	7	8	9	10	11	2	3	4	5	6	7	8	2	3	4	5	6	7	8	6	7	8	9	10	11	12
12	13	14	15	16	17	18	9	10	11	12	13	14	15	9	10	11	12	13	14	15	13	14	15	16	17	18	19
19	20	21	22	23	24	25	16	17	18	19	20	21	22	16	17	18	19	20	21	22	20	21	22	23	24	25	26
26	27	28	29	30	31		23	24	25	26	27	28		23	24	25	26	27	28	29	27	28	29	30			

MAY 2026							JUNE 2026							JULY 2026							AUGUST 2026						
M	T	W	T	F	S	S	M	T	W	T	F	S	S	M	T	W	T	F	S	S	M	T	W	T	F	S	S
				1	2	3																					
4	5	6	7	8	9	10	1	2	3	4	5	6	7	6	7	8	9	10	11	12	3	4	5	6	7	8	9
11	12	13	14	15	16	17	8	9	10	11	12	13	14	13	14	15	16	17	18	19	10	11	12	13	14	15	16
18	19	20	21	22	23	24	15	16	17	18	19	20	21	20	21	22	23	24	25	26	17	18	19	20	21	22	23
25	26	27	28	29	30	31	22	23	24	25	26	27	28	27	28	29	30	31			24	25	26	27	28	29	30

Godwin Junior School 2026-27



School Holiday

Bank Holiday

Pupil Day

INSET Day

SEPTEMBER 2026							OCTOBER 2026							NOVEMBER 2026							DECEMBER 2026						
M	T	W	T	F	S	S	M	T	W	T	F	S	S	M	T	W	T	F	S	S	M	T	W	T	F	S	S
	1	2	3	4	5	6				1	2	3	4							1		1	2	3	4	5	6
7	8	9	10	11	12	13	5	6	7	8	9	10	11	2	3	4	5	6	7	8	7	8	9	10	11	12	13
14	15	16	17	18	19	20	12	13	14	15	16	17	18	9	10	11	12	13	14	15	14	15	16	17	18	19	20
21	22	23	24	25	26	27	19	20	21	22	23	24	25	16	17	18	19	20	21	22	21	22	23	24	25	26	27
28	29	30					26	27	28	29	30	31		23	24	25	26	27	28	29	29	30	31				

JANUARY 2027							FEBRUARY 2027							MARCH 2027							APRIL 2027						
M	T	W	T	F	S	S	M	T	W	T	F	S	S	M	T	W	T	F	S	S	M	T	W	T	F	S	S
				1	2	3	1	2	3	4	5	6	7	1	2	3	4	5	6	7				1	2	3	4
4	5	6	7	8	9	10	8	9	10	11	12	13	14	8	9	10	11	12	13	14	5	6	7	8	9	10	11
11	12	13	14	15	16	17	15	16	17	18	19	20	21	15	16	17	18	19	20	21	12	13	14	15	16	17	18
18	19	20	21	22	23	24	22	23	24	25	26	27	28	22	23	24	25	26	27	28	19	20	21	22	23	24	25
25	26	27	28	29	30	31								29	30	31					26	27	28	29	30		

MAY 2027							JUNE 2027							JULY 2027							AUGUST 2027						
M	T	W	T	F	S	S	M	T	W	T	F	S	S	M	T	W	T	F	S	S	M	T	W	T	F	S	S
					1	2		1	2	3	4	5	6					1	2	3	4						1
3	4	5	6	7	8	9	7	8	9	10	11	12	13	5	6	7	8	9	10	11	2	3	4	5	6	7	8
10	11	12	13	14	15	16	14	15	16	17	18	19	20	12	13	14	15	16	17	18	9	10	11	12	13	14	15
17	18	19	20	21	22	23	21	22	23	24	25	26	27	19	20	21	22	23	24	25	16	17	18	19	20	21	22
24	25	26	27	28	29	30	28	29	30					26	27	28	29	30	31		23	24	25	26	27	28	29
31																					30	31					