



Godwin Newsletter - 1st March 2024

preparing pupils for lifelong success



Head Teacher's Message

Congratulations to the pupils who represented us at this week's Panathlon Challenge - Discovery Swimming Gala. They were a real credit to the school and performed brilliantly - our teams finished second and third out of all Newham Schools. Well done to everyone who took part!

Next Monday sees a large group of our Year 5 pupils perform Macbeth at the Kenneth Moore Theatre, Ilford. They have been really committed to rehearsing and we can't wait to see them on stage in a professional theatre. We will share a photo next week.

Thank you to The Friends of Godwin for organising today's cake sale - we will let you know shortly how much they have raised to purchase new reading books.

Best wishes for the weekend



Important Dates

Thursday 7th March

Debate Mate Competition at Godwin (3:30 to 5:45)

World Book Day

Monday 11th - Friday 15th March

Year 5 Bikeability lessons

Friday 15th March

Comic Relief

NO NUT OR SESAME PRODUCTS ON SCHOOL PREMISES

Please never send food containing nuts or sesame to school with your child. This includes lunches for educational visits and after-school snacks.

The only acceptable snacks for break time or before clubs are fresh fruit and vegetables. Please do not allow your child to bring other items.



A huge shout out to Nora and her family for collecting 110 school balls from a neighbour. Not only did they collect the balls but also washed them and pumped them all up. This shows a huge act of kindness and thoughtfulness and is greatly appreciated. Thank you so much from all at Godwin.

World Book Day



World Book Day will take place on Thursday 7th March - that's next week! At Godwin, our celebrations will include dressing up and we would love everyone to get involved.



Many costumes can be created with the clothes children already own.

Click [here](#) or [here](#) for more ideas.



This week our Year 3 classes visited Wanstead Flats to support their current geography learning. Using a compass to read a map, their newly-acquired orienteering skills helped them to find clues hidden at different locations.

The children soon discovered that if each riddle was cracked, an animal was revealed!



Here's an example of one of the clues. Can you solve it?

What creature is this?

I am a silent-flier.

A head twister.

A night-time hooter.

I see everything.



The answer is... an owl!

On Track Writing Competition

This week our winner is Juana from 4I, who considered what a passenger may think as they pass by our school:



Every day I go back to my childhood to see those children playing. My name is Tina. I go to work by the Barking to Gospel Oak Overground train every day.

I see them playing for a few seconds every morning on their playground, but I love those few seconds. It reminds me of my childhood, my school playground, my friends and my teachers. Those times were full of joy and happiness.

I wish I could go back to my school life and playing with my friends like those children who are playing in the playground.



ROYAL MINT MUSEUM

COINS & THE SEA

SHORT STORY COMPETITION



How to write a story

Write a story about a ship carrying a cargo including gold coins that sails into a storm and gets into trouble. What happens next? Before you begin writing your story do some research to make sure your story answers the brief. We have provided some information on our website about the topic to get you started <https://www.royalmintmuseum.org.uk/learning/> What do you need to think about before you begin writing?

purpose

We have given you the start of your story, but where do you want your story to go next? How do you want the reader to feel? Maybe you want them to feel happy or excited by your story, or perhaps you want them to feel sad. You could write a spooky story that scares your reader.

Once you have decided what the purpose of your story will be, think how you can achieve this and what words you can use in your writing to set the mood.

setting

Your story needs to start with a ship, but does the story stay on the ship? If so, what kind of ship is it? A sailing ship, or maybe a steam ship? Or does the action happen somewhere else?

You can set your story anywhere you like but it must make sense for your plot and purpose.

character

Who is the star of your story? Is it you or someone you have made up or is it a real person? It could be a historical figure. Maybe there are lots of people in your story. It doesn't have to be a person; it could be an animal like the ship's dog, or a pirate's parrot. Or it could even be a story about an object like a coin!

structure

When you write a story you want there to be a beginning, middle and an end.

THE BEGINNING

this is where you set the scene and introduce your characters.

THE MIDDLE

this is where the action happens.

THE END

this is where you want to conclude your story.



Godwin's Tin Tower for Comic Relief

COMIC
RELIEF



On Red Nose Day (Friday 15th March) we will be creating a tower made from tins of donated food! How high can we go?

These tins will be donated to our local foodbank, supporting families in need in our community. Please donate whatever you can.



BIG BATTERY HUNT

If we win, we get money to upgrade the playground!



Deadline: Wednesday 12th June 2024

If we collect the most batteries per student (on average) we will win **£3,500** for our school playground.



**Forest Gate** **COMMUNITY GARDEN**

OPENING HOURS

Friday 10 - 3pm

Saturday 10 - 3pm

Sunday 10 - 12pm

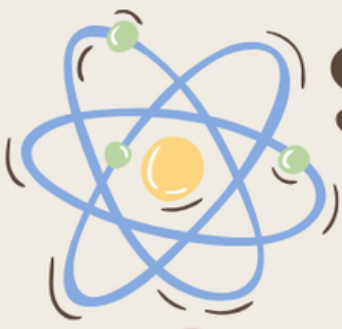
info@fgcommunitygarden.org

www.fgcommunitygarden.org

The Forest Gate Community Garden will be holding Gardening with Nature sessions on Fridays from the end of March.

These will run at 11am and 4pm and last an hour. They will include practical activities led by their talented lead gardener Stephen Mason. You can email them at the address above to reserve a place.

Additionally, their Creating with Nature workshops programme starts in April. This will include painting and drawing from nature and a dye workshop.



SCIENCE WEEK POSTER COMPETITION



The British Science Week 2024 poster competition is open now!

The theme this year is 'Time', – there are loads of STEM topics to explore!

You could create a poster showing how a certain type of technology has changed over time, or even the advancement of time-telling technology itself. What about going futuristic and show us how you think the world might look in years to come, or perhaps look at nature: lifecycles, lifespans, evolution and hibernation.

Nature is full of timely topics!

Posters must be submitted to class teachers by Wednesday 20th March 2024. Please write your name and class on the back of your submission.

See a full list of prizes and rules here:
<https://www.britishscienceweek.org/plan-your-activities/poster-competition/>





On March 8th, we celebrate *International Women's Day* and consider fair treatment for women and girls worldwide. Fairtrade is particularly important for them, as *UNCRF Article 2* aims to prevent discrimination. Further, it aims to promote climate friendly production methods, meaning that Fairtrade products are people and planet friendly.

Fairtrade is crucial in making our planet more equitable for everyone. It ensures that farmers and workers are treated fairly and paid a living wage, in line with *UNCRF Article 29*.

This year the Fairtrade Foundation will turn 30 years old. By supporting and choosing Fairtrade products, we will support the environment while promoting fair treatment for women, children's right to education and a clean safe environment. *What could we do as a school to mark Fairtrade's 30th birthday in September?*



Mindfulness Corner

Every Friday we will highlight a different group or organisation with resources for mental health and wellbeing. (We are not endorsing any particular site nor are we ambassadors for it - we are simply providing pointers towards sites that might be interesting/helpful).



This week we feature mental health support from the NHS:
<https://www.nhs.uk/oneyou/every-mind-matters>

“Extraordinary things are always hiding in places people never think to look.” Jodi Picoult

CLASS	ATTENDANCE	CLASS	ATTENDANCE
3K	100%	5V	90%
3Z	98%	5O	87%
3Y	88%	5T	92%
3J	87%	6W	92%
4K	96%	6K	94%
4B	88%	6M	93%
4I	94%	average	92%

Whole-Class Attendance

for the week beginning
Monday 19th February

Whole school attendance for the year to date is currently 93.7%. This is more than 2% below our target. Please help us to reach our target by ensuring that your child is in school every day.

Coming to school regularly is important for your child's future. Parents and Carers are responsible for making sure their child receives full-time education. We do not authorise children being picked up early for parents, carers or sibling appointments. Parents and Carers need to make arrangements in advance if they are unable to pick their child up from school at the end of the day. It is impossible for children to catch up on the learning that they miss. Thank you for your understanding and continued support in this matter.

Should you require some support, Premier Education operate an after school club that is open daily until 5:45pm. <https://www.premier-education.com/>

Click on the tab at the top that says Parents, click on Extra Curricular Clubs, type in Godwin to find our school and complete your details.

Attendance Cup

Congratulations to 3K on 100% attendance last week. Fantastic!



Punctuality Cup

3Z, 4K and 6W won the cup this week with every learner on time each day.



Times Table

Rock Stars

4I and 6W take the trophies this week. Keep it up!



Lining Up Cup

This week's winners are 3K and 6W





Achievement Awards

3Y - Arthur: for trying his best to focus and persevere in class

3J - Ibraheem P: for being able to explain his thoughts and ideas during English lessons

3K - Mae: for being an attentive learner and showing curiosity in lessons

3Z - Arthur: for excellent collaboration with his learning partner

4K - Ziyad: for persevering in his maths learning and challenging himself

4I - Minha: for being an excellent learning partner and always working well with others

4B - Adam: for working well collaboratively with others and being kind to his peers

5O - Amelia: for being an incredibly collaborative and supportive learning partner

5V - Eli: for persevering and seeking to collaborate well with his new classmates

5T - Yunus: for collaborating well with his learning partner and persevering in English

6W - Araf: for clearly explaining his reasoning in RE

6K - Oskaras: for becoming more confident when explaining reasoning in maths

6M - Esa: for his perseverance in his maths learning this week



Godwin Junior School 2023-24



School Holiday	Bank Holiday	INSET Day
	Pupil Day	

SEPTEMBER 2023							OCTOBER 2023							NOVEMBER 2023							DECEMBER 2023										
M	T	W	T	F	S	S	M	T	W	T	F	S	S	M	T	W	T	F	S	S	M	T	W	T	F	S	S				
				1	2	3						1	2	3	4	5			1	2	3	4	5						1	2	3
4	5	6	7	8	9	10	2	3	4	5	6	7	8				6	7	8	9	10	11	12	4	5	6	7	8	9	10	
11	12	13	14	15	16	17	9	10	11	12	13	14	15				13	14	15	16	17	18	19	11	12	13	14	15	16	17	
18	19	20	21	22	23	24	16	17	18	19	20	21	22				20	21	22	23	24	25	26	18	19	20	21	22	23	24	
25	26	27	28	29	30		23	24	25	26	27	28	29				27	28	29	30				25	26	27	28	29	30	31	
							30	31																							

JANUARY 2024							FEBRUARY 2024							MARCH 2024							APRIL 2024							
M	T	W	T	F	S	S	M	T	W	T	F	S	S	M	T	W	T	F	S	S	M	T	W	T	F	S	S	
1	2	3	4	5	6	7				1	2	3	4						1	2	3	1	2	3	4	5	6	7
8	9	10	11	12	13	14	5	6	7	8	9	10	11	4	5	6	7	8	9	10	8	9	10	11	12	13	14	
15	16	17	18	19	20	21	12	13	14	15	16	17	18	11	12	13	14	15	16	17	15	16	17	18	19	20	21	
22	23	24	25	26	27	28	19	20	21	22	23	24	25	18	19	20	21	22	23	24	22	23	24	25	26	27	28	
29	30	31					26	27	28	29				25	26	27	28	29	30	31	29	30						

MAY 2024							JUNE 2024							JULY 2024							AUGUST 2024								
M	T	W	T	F	S	S	M	T	W	T	F	S	S	M	T	W	T	F	S	S	M	T	W	T	F	S	S		
		1	2	3	4	5						1	2	1	2	3	4	5	6	7						1	2	3	4
6	7	8	9	10	11	12	3	4	5	6	7	8	9	8	9	10	11	12	13	14	5	6	7	8	9	10	11		
13	14	15	16	17	18	19	10	11	12	13	14	15	16	15	16	17	18	19	20	21	12	13	14	15	16	17	18		
20	21	22	23	24	25	26	17	18	19	20	21	22	23	22	23	24	25	26	27	28	19	20	21	22	23	24	25		
27	28	29	30	31			24	25	26	27	28	29	30	29	30	31				26	27	28	29	30	31				



Godwin Junior School 2024-25



School Holiday	Bank Holiday	Pupil Day	INSET Day
----------------	--------------	-----------	-----------

SEPTEMBER 2024							OCTOBER 2024							NOVEMBER 2024							DECEMBER 2024						
M	T	W	T	F	S	S	M	T	W	T	F	S	S	M	T	W	T	F	S	S	M	T	W	T	F	S	S
2	3	4	5	6	7	8	1	2	3	4	5	6	4	5	6	7	8	9	10	2	3	4	5	6	7	8	
9	10	11	12	13	14	15	7	8	9	10	11	12	13	11	12	13	14	15	16	17	9	10	11	12	13	14	15
16	17	18	19	20	21	22	14	15	16	17	18	19	20	18	19	20	21	22	23	24	16	17	18	19	20	21	22
23	24	25	26	27	28	29	21	22	23	24	25	26	27	25	26	27	28	29	30	23	24	25	26	27	28	29	
30							28	29	30	31			20 Pupil Days	20 Pupil Days	20 Pupil Days	20 Pupil Days	30	31					15 Pupil Days	15 Pupil Days			
18 Pupil Days	21 Staff Days	19 Pupil Days	19 Staff Days	20 Pupil Days	20 Staff Days	19 Pupil Days	19 Staff Days																				

JANUARY 2025							FEBRUARY 2025							MARCH 2025							APRIL 2025						
M	T	W	T	F	S	S	M	T	W	T	F	S	S	M	T	W	T	F	S	S	M	T	W	T	F	S	S
6	7	8	9	10	11	12	3	4	5	6	7	8	9	3	4	5	6	7	8	9	1	2	3	4	5	6	
13	14	15	16	17	18	19	10	11	12	13	14	15	16	10	11	12	13	14	15	16	7	8	9	10	11	12	13
20	21	22	23	24	25	26	17	18	19	20	21	22	23	17	18	19	20	21	22	23	14	15	16	17	18	19	20
27	28	29	30	31			24	25	26	27	28			24	25	26	27	28	29	30	21	22	23	24	25	26	27
18 Pupil Days	20 Staff Days	15 Pupil Days	15 Staff Days	21 Pupil Days	21 Staff Days	15 Pupil Days	15 Staff Days	21 Pupil Days	21 Staff Days	21 Pupil Days	21 Staff Days	16 Pupil Days	16 Staff Days														

MAY 2025							JUNE 2025							JULY 2025							AUGUST 2025						
M	T	W	T	F	S	S	M	T	W	T	F	S	S	M	T	W	T	F	S	S	M	T	W	T	F	S	S
5	6	7	8	9	10	11	2	3	4	5	6	7	8	7	8	9	10	11	12	13	4	5	6	7	8	9	10
12	13	14	15	16	17	18	9	10	11	12	13	14	15	14	15	16	17	18	19	20	11	12	13	14	15	16	17
19	20	21	22	23	24	25	16	17	18	19	20	21	22	21	22	23	24	25	26	27	18	19	20	21	22	23	24
26	27	28	29	30	31		23	24	25	26	27	28	29	28	29	30	31			25	26	27	28	29	30	31	
16 Pupil Days	16 Staff Days	21 Pupil Days	21 Staff Days	21 Pupil Days	21 Staff Days	21 Pupil Days	21 Staff Days	17 Pupil Days	17 Staff Days	17 Pupil Days	17 Staff Days	16 Pupil Days	16 Staff Days														

Total:

- Autumn Term: 72 Pupil Days, 75 Staff Days
- Spring Term: 58 Pupil Days, 60 Staff Days
- Summer Term: 60 Pupil Days, 60 Staff Days
- Grand Total: 190 Pupil Days, 195 Staff Days